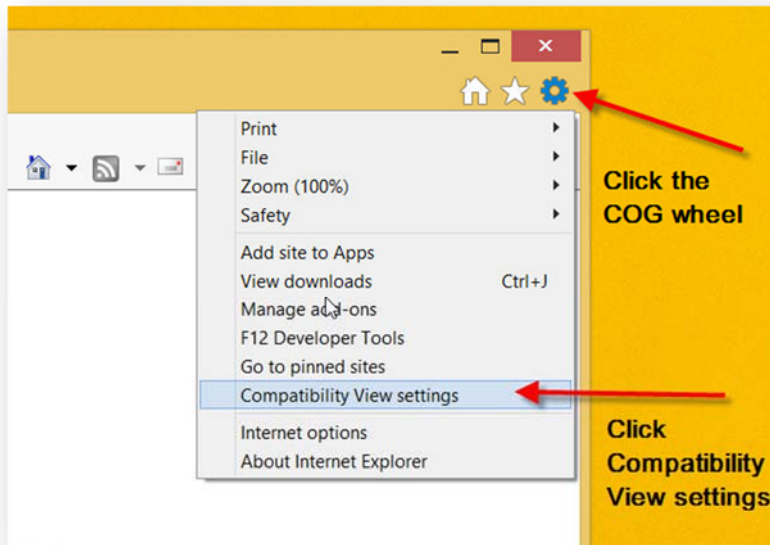


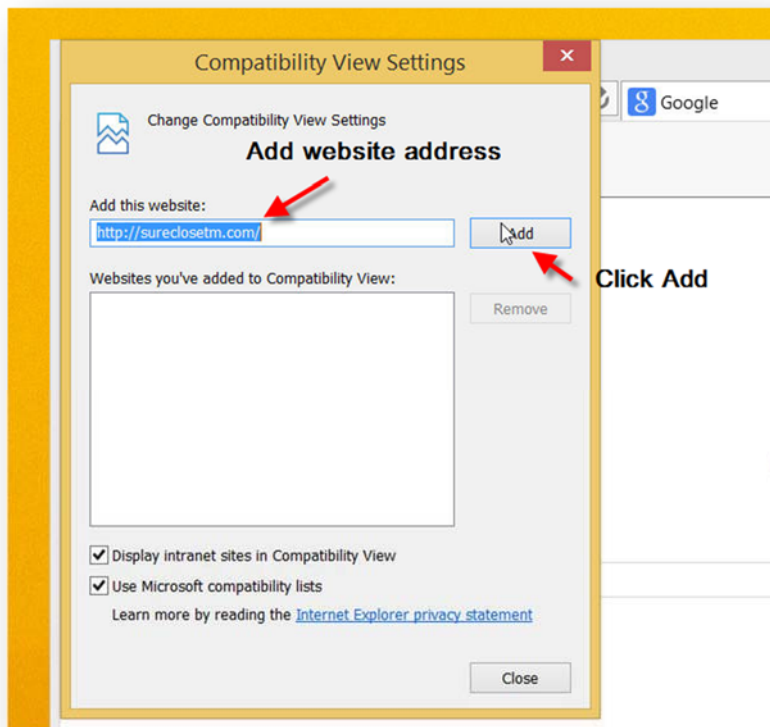
## Instructions for adding SureClose to Compatibility Mode in Internet Explorer 11 or how to roll back to Internet Explorer 10.

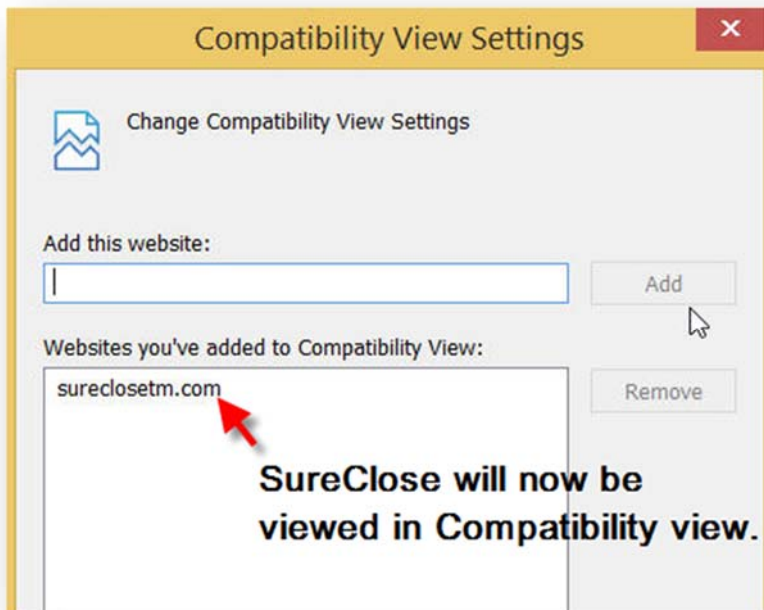
### How to turn on compatibility mode in Internet Explorer 11:

In Internet Explorer 11 click on the Cog Wheel in the upper right corner of the window and choose the **Compatibility View settings** option.



Add the website of <http://sureclosetm.com/> and click the **Add** button.



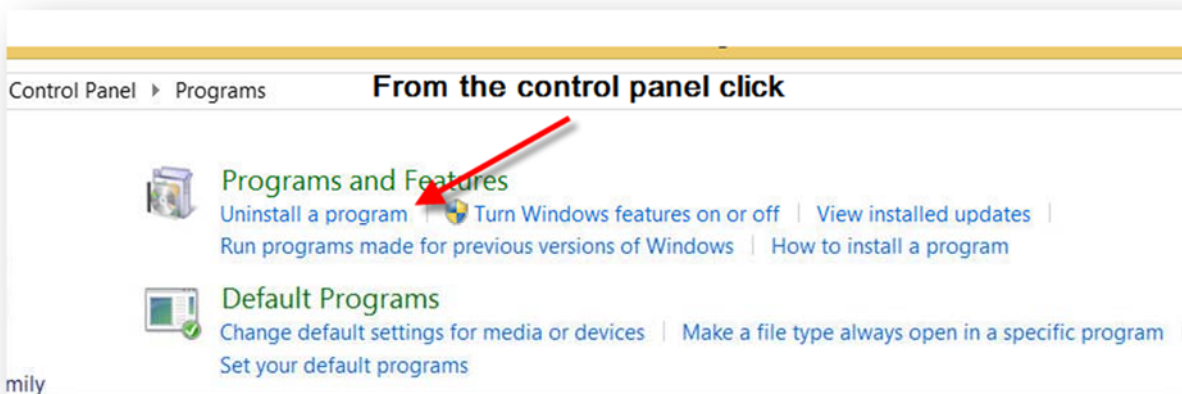


**\*\* Note:** Some features are not available in Internet Explorer 11.

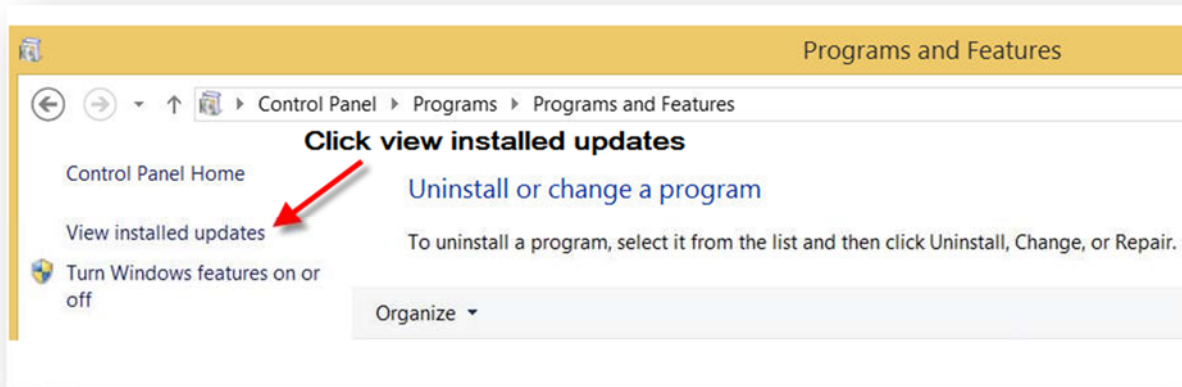
### **Rolling Internet Explorer back to Internet Explorer 10:**

**\*\* Note:** Prior to rolling back your Internet Explorer to an older version please consult with your local IT department if applicable.

From your Control Panel choose the option under Programs and Features of **Uninstall a program**.



Click **View Installed updates** on the left.



Find the Microsoft Windows update for **Internet Explorer 11**, right click and choose **Uninstall**.



**\*\* NOTE:** Some versions of Windows will not roll back to Internet Explorer 10 if the computer was formatted with Internet Explorer 11. If that is the case, SureClose can be used with Google Chrome or Mozilla Firefox.

Download for Google Chrome: <https://www.google.com/intl/en/chrome/browser/>

Download for Mozilla Firefox: <https://www.mozilla.org/en-US/firefox/features/>

**If you experience technical difficulty rolling back to IE10 please see below:**

- For Stewart Title Offices, please call 855-330-2800 or email [customer care@stewart.com](mailto:customer care@stewart.com).
- All others, please contact your local IT office first. If they need assistance or have any questions please call 877-800-3132 or email [customer care@propertyinfo.com](mailto:customer care@propertyinfo.com).